

DECAL LOCATION

Your H&S Manure Spreader was manufactured with operator safety in mind. Located on the manure spreader are various decals to aid in operation, and warn of danger or caution areas. Pay close attention to all the decals on your Manure Spreader.



DO NOT REMOVE ANY OF THESE DECALS. IF DECALS ARE LOST, DAMAGED, OR IF MANURE SPREADER IS REPAINTED, REPLACE DECALS. REMEMBER: DECALS ARE FOR YOUR PROTECTION AND INFORMATION.

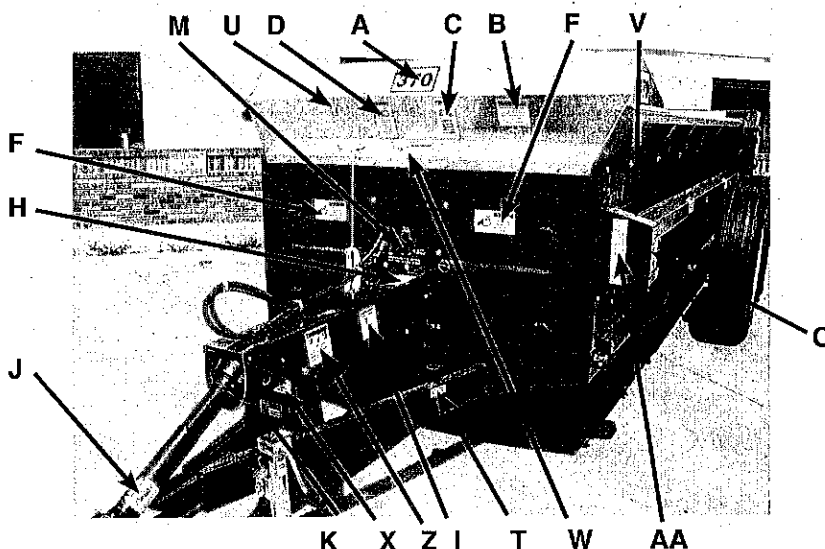
Listed below are the decals on your Manure Spreader. These decals may be ordered individually by part number or by ordering a complete set.

ITEM	PART NO.	DESCRIPTION
A	10186E	(3) Model 310
	4787A	(3) Model 370
	82090	(3) Model 430
AA		(5) Amber Reflector
B	72203A	Warning - Help Avoid Injury
C	9194B	Danger - Never Allow Riders
D	1494J	(2) Warning - Do Not Clean or Work
F	1494B	(2) Warning - Do Not Remove Shields
G	093020	(2) Grease
H	12794	(3) Warning - Do Not Remove Shields
I	9194A	(2) Danger - No Step
J	Weasler	Danger - Rotating Driveline (H&S Decal 1494L)
K		Serial Number
L	1494A	(3) Warning - Do Not Operate
M	71188H	Beater/Apron Control
N		H&S Decal B22
O		H&S Decal B17
P	112-11176	(2) Shear Bolts
Q	111593C	(2) Danger - Stay Clear of Endgate Arms
R	111593A	(2) Danger - Stay Clear of Beater
S		(2) Red Reflector
T	71188B	Jack Storage Position
U	H&S	Patent Numbers
V	1494K	(2) Warning - Do Not Remove Shields
W	11599	Warning - Stay Clear of Leaks
X	71494A	(4) Warning - Do Not Operate
Y	3494A	(2) Remote Grease - Axle Pivot
Z	82602	Warning - Crushing Hazard
	72903-310	Complete Set of Decals - Model 310
	72903-370	Complete Set of Decals - Model 370
	72903-430	Complete Set of Decals - Model 430

Paint - H & S Red

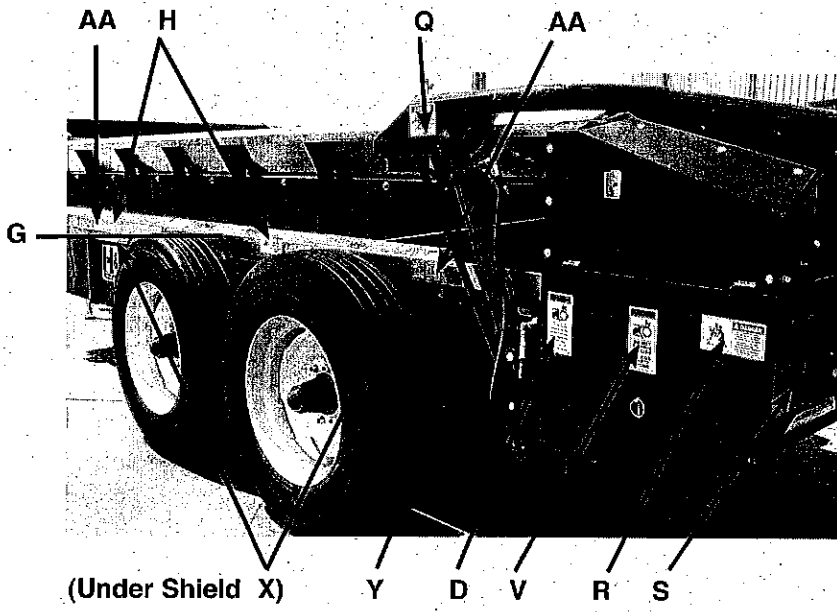
- ZX21
- ZX22
- ZX23

- Gallon
- Quart
- Pint





L I



(Under Shield X)

Some Shields removed for decal identification. Make sure all shields are in place before operating spreader.

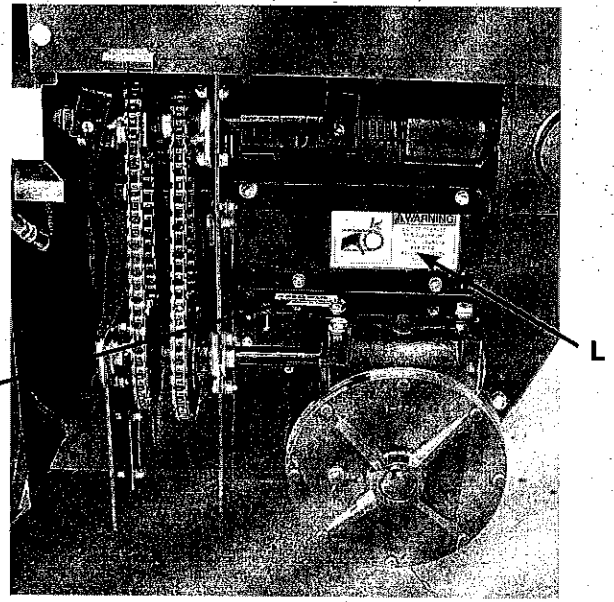
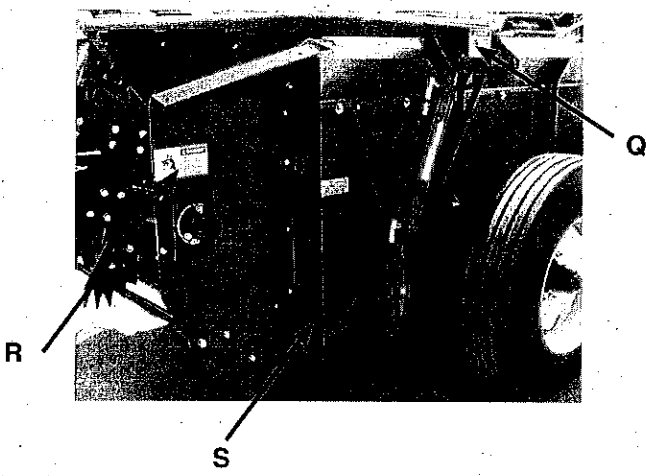


FIGURE 1

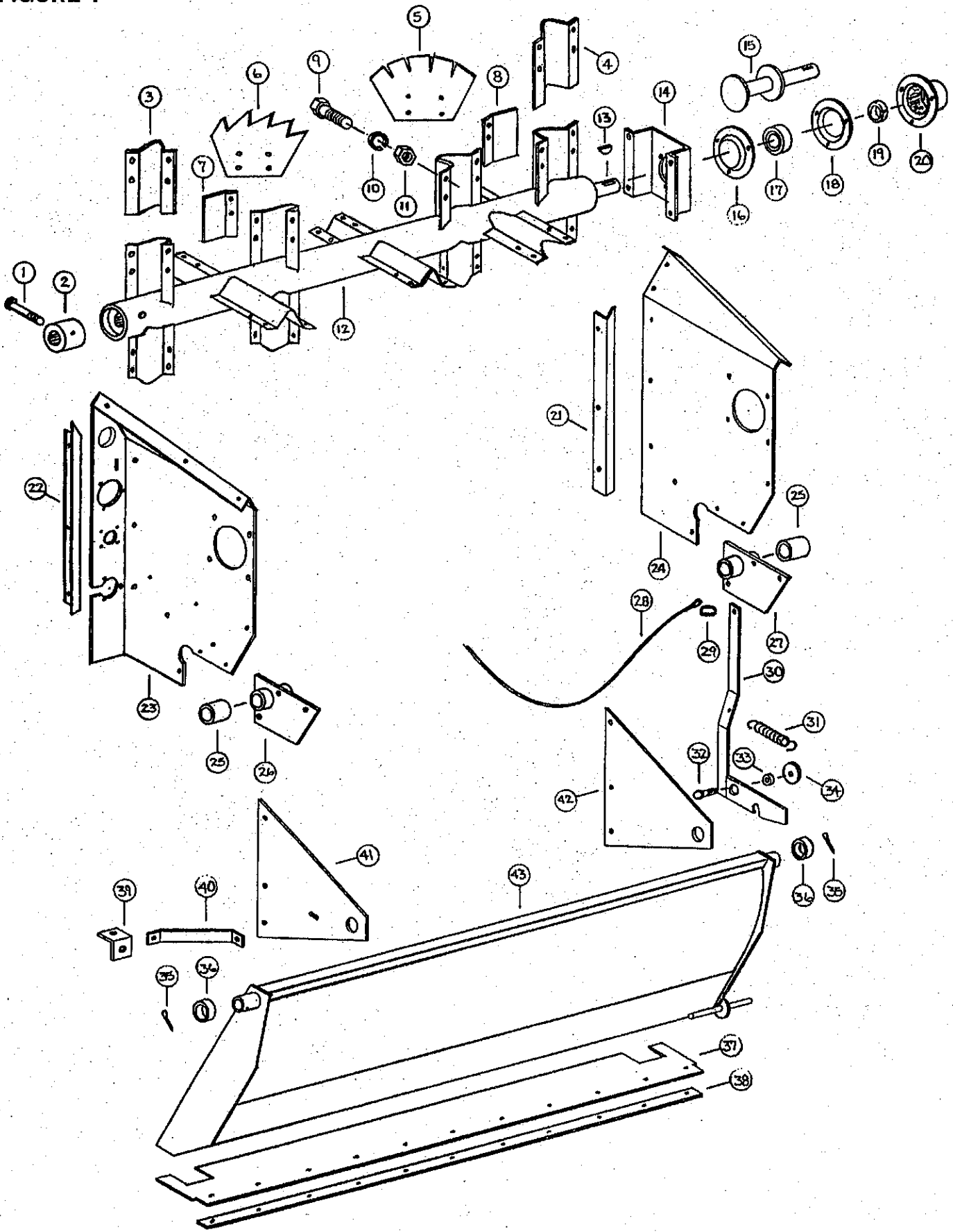


FIGURE 1
H&S MODELS 310, 370 & 430
BEATER AND PAN ASSEMBLY
SPREADER MODEL & PART NO.

ITEM	310	370	430	DESCRIPTION
1.	23N1	"	"	5/16" x 5" GR.5 Bolt
2.	23N2	"	"	Splined Beater Insert
3.	23N3	"	"	Beater Blade Holder LH
4.	23N4	"	"	Beater Blade Holder RH
5.	23N276	"	"	Beater Blade - Hardened
6.	23N277	"	"	Beater Blade - Hardened
7.	23N7	"	"	Beater Blade Wiper LH
8.	23N8	"	"	Beater Blade Wiper RH
9.	R10	"	"	1/2" x 1-1/4" Bolt GR.5
10.	R35	"	"	1/2" Lock Washer
11.	R11	"	"	1/2" Lock Nut
12.	23N9	"	"	Beater
13.	5B9	"	"	3/8" x 1-1/4" Woodruff Key
14.	23N10	"	"	Beater Shaft Support
15.	23N11	"	"	Beater Stub Shaft
16.	F116	"	"	Bearing Flange (Heavy Duty)
17.	F115	"	"	Bearing (Grease Type)
18.	F114A	"	"	Bearing Flange w/Zerk 45°
19.	F16	"	"	Lock Collar
20.	23N12	"	"	Bearing Flange Guard
21.	23N13	37N1	37N1	RH Side Poly Hold down
22.	23N14	37N2	37N2	LH Side Poly Hold down
23.	23N175	37N50	37N50	LH Main Panel
24.	23N16	37N4	37N4	RH Main Panel
25.	23N17	"	"	Drive Shaft Bushing
26.	37N78	"	"	Drive Shaft Bracket LH
27.	23N19	"	"	Drive Shaft Bracket RH
28.	31N1	37N5	37N5	Pan Trip Rope
29.	R31	"	"	Clip
30.	23N21	"	"	Pan Trip Lever
31.	R27	"	"	Spring
32.	23N22	"	"	1/2" x 1-1/2" Carriage Bolt
33.	23N23	"	"	Trip Lever Spacer
34.	A34	"	"	1/2" Flat Washer
35.	R70	"	"	Cotter Pin
36.	F112	"	"	Spacer
37.	23N24	"	"	Pan Rubber Flap
38.	23N25	"	"	Pan Strap
39.	23N26	"	"	Pan Brace Angle
40.	23N27	"	"	Pan Support Brace
41.	23N28	"	"	LH Pan Support
42.	23N29	"	"	RH Pan Support
43.	23N30	"	"	Pan

NOTE: " (SAME PART NO. AS MODEL 310)

FIGURE 2

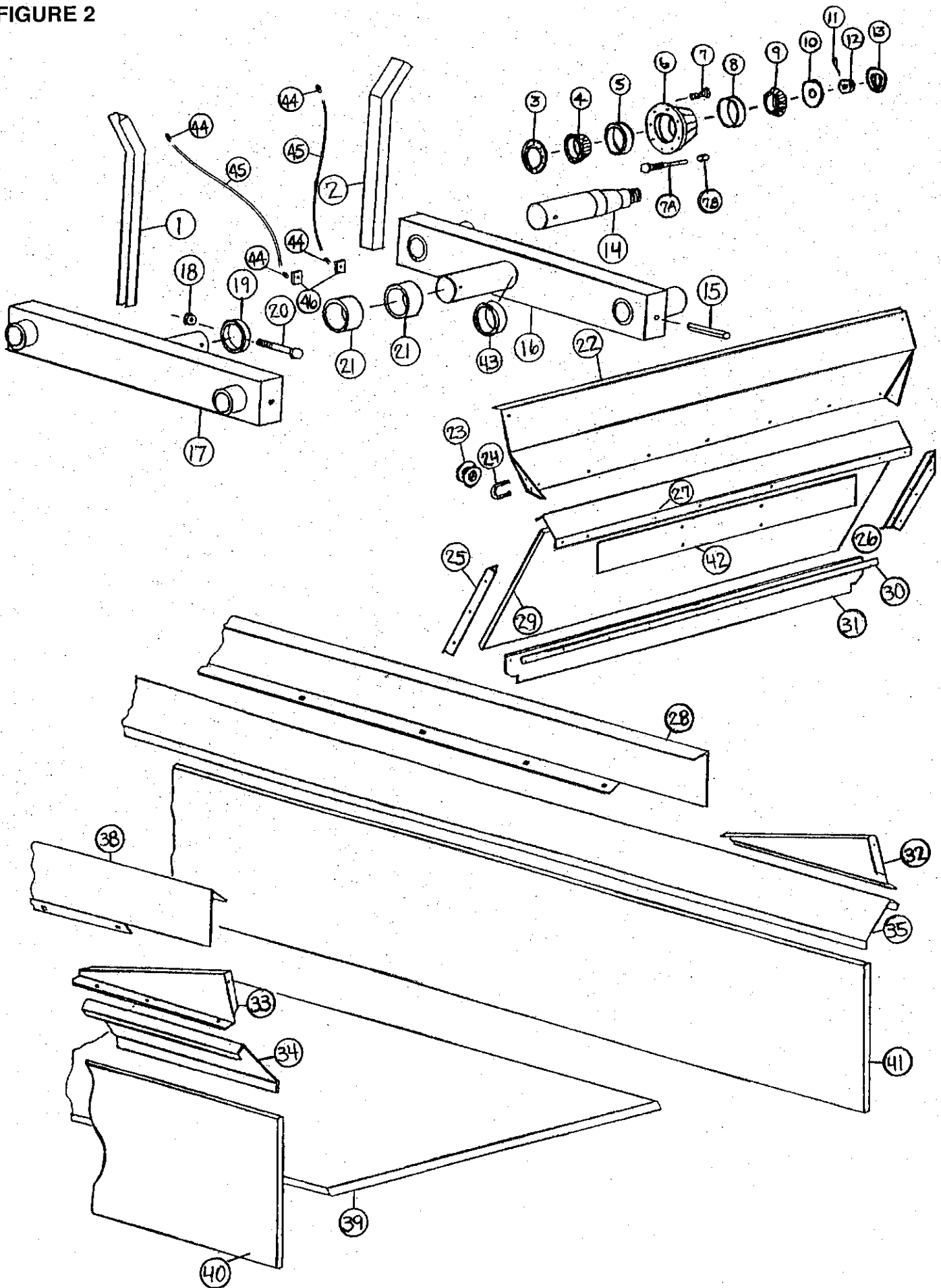


FIGURE 2
H&S MODELS 310, 370 & 430
SPINDLE, HUB AND BOX PARTS
SPREADER MODEL & PART NO.

ITEM	310	370	430	DESCRIPTION
1.	23N31	37N6	37N6	RH Side Stake
2.	23N32	37N7	37N7	LH Side Stake
3.	B8	B90	B90	Seal
4.	B7	B91	B91	Inner Bearing
5.	B7A	B91A	B91A	Inner Race
6.	B6	26G4	26G4	Hub - 2003 & Previous
*	B6	26G4A	26G4A	Hub - 2004 to Present
7.	B32	-	-	Hub Bolt
7A.	-	26G5	26G5	Stud Bolt 9/16" - 2003 & Previous
*	-	26G5A	26G5A	Stud Bolt 5/8" - 2004 to Present
7B.	-	26G6	26G6	Lug Nut 9/16" - 2003 & Previous
*	-	26G6A	26G6A	Lug Nut 5/8" - 2004 to Present
8.	B5A	B94A	B94A	Outer Race
9.	B5	B94	B94	Outer Bearing
10.	B4	"	"	Washer
11.	B31	"	"	Cotter Pin
12.	B3	"	"	Nut
13.	B2	"	"	Hub Cap
14.	31N2	37N8	-	Spindle
Not Shown	31N48	16SV203	"	Spindle for 14 x 16.1 Wheel
15.	31N4	"	"	Roll Pin 1/2" x 4"
16.	31N5	37N85	37N85	Tandem Beam LH
17.	31N6	37N84	37N84	Tandem Beam RH
18.	9S17	"	"	1/2" Lock Nut
19.	B60	37N86	"	Ring
20.	B61	"	"	1/2" x 5" Bolt GR.5
21.	B58	"	"	Bushing for Tandem Axle
22.	23N34	"	"	Front Flare
23.	F33	"	"	Rope Guide
24.	F32	"	"	U-Bolt
25.	23N35	37N12	37N12	RH Gate Angle
26.	23N36	37N13	37N13	LH Gate Angle
27.	23N176	"	"	Front Flare Support
28.	-	-	43N1	Side Extension LH
29.	23N270A	37N65A	37N65A	Front Gate Plywood with Fiberglass
30.	23N40	"	"	Strap for Rubber
31.	23N41	"	"	Front Gate Rubber
32.	23N42	"	"	Splash Guard Side LH
33.	23N43	"	"	Splash Guard Side RH
34.	31N24	37N16	43N3	RH Side Flare
35.	31N25	37N17	43N4	LH Side Flare
38.	-	-	43N2	Side Extension RH
39.	31N49	37N81	37N81	Poly Floor
40.	31N31A	37N67A	37N67A	RH Side Plywood with Fiberglass
41.	31N32A	37N68A	37N68A	LH Side Plywood with Fiberglass
42.	-	37N51	37N51	Front Panel
43.	-	B111	B111	Outer Bushing for Tandem Axle
44.	S47	"	"	Grease Line Fitting
45.	31N43	"	"	Grease Line
46.	16V9	"	"	Grease Line Bracket
Not Shown	12V36	"	"	Wheel 14 x 16.1
Not Shown	23N54	"	"	Tire 16.5 x 16.1
Not Shown	23N179A	"	-	Wheel 8 x 22.5 - Tubeless
Not Shown	MSO8C	"	-	Tire 10.00 x 22.5
Not Shown	31N26	37N52	37N52	Complete Frame

NOTE: " (SAME PART NO. AS MODEL 310) - (PART IS NOT USED ON THIS MODEL)

FIGURE 3

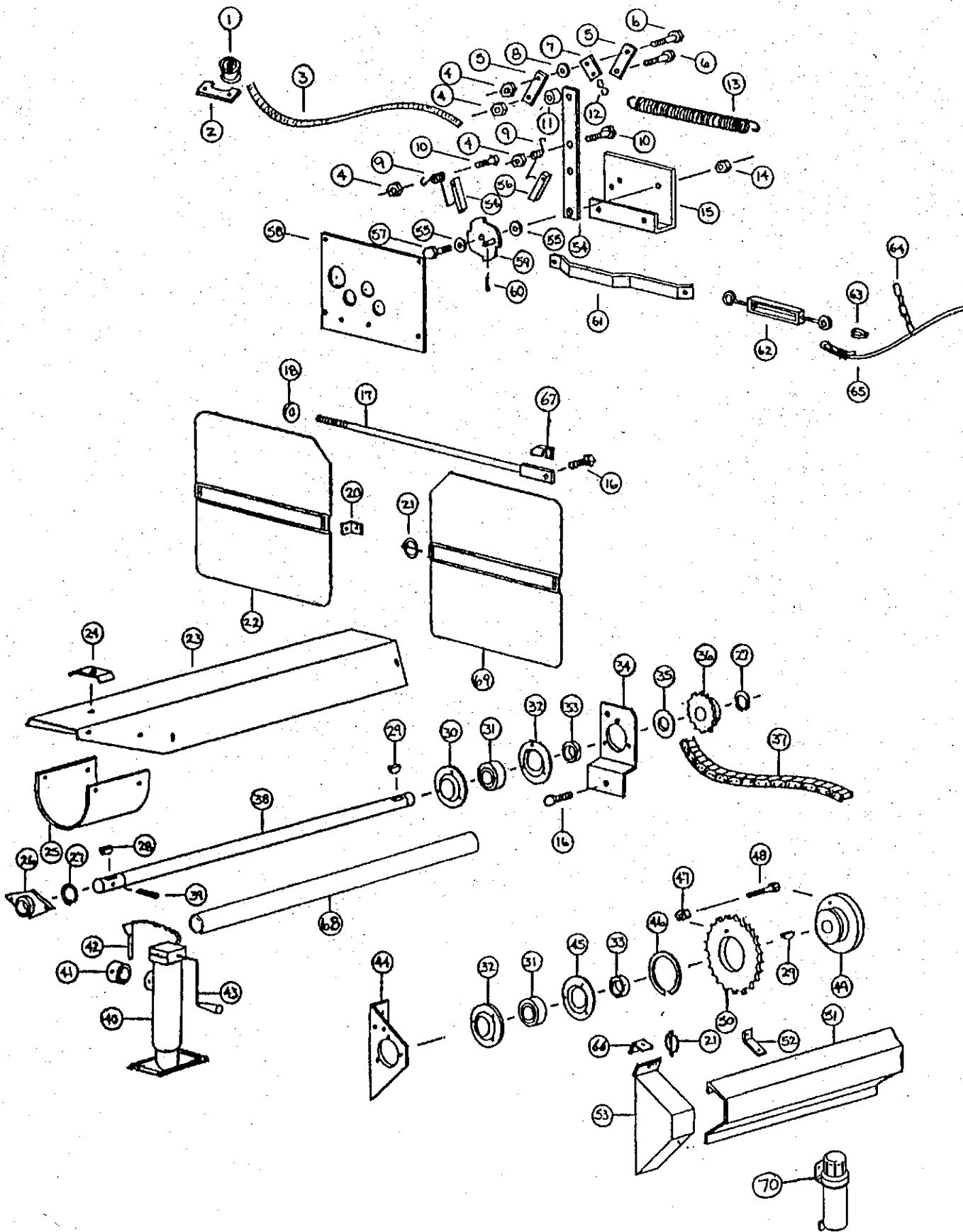


FIGURE 3
H&S MODELS 310, 370 & 430
FRONT SHIELD AND DRIVE ASSEMBLY
SPREADER MODEL & PART NO.

ITEM	310	370	430	DESCRIPTION	ITEM	310	370	430	DESCRIPTION
1.	F33	"	"	Cable Guide	*	12N120	"	"	Jack Gear Repair Kit
2.	23N182	"	"	Bracket	41.	27N51	"	"	Jack Mount
3.	23N183	"	"	Rope	42.	27N50	"	"	Jack Pin
4.	K93	"	"	3/8" Lock Nut	43.	12N119	"	"	Handle
5.	23N184	"	"	Bracket	*	12N118	"	"	Replacement Bearing
6.	B67	"	"	3/8" x 1-1/4" Bolt	44.	23N74	"	"	Bearing Plate
7.	23N185	"	"	Spring Bracket	45.	F114A	"	"	Flange
8.	X67	"	"	3/8" Flat Washer	46.	23N189	"	"	Snap Ring
9.	23N186	"	"	Dog Spring	47.	D81	"	"	Lock Nut
10.	A15	"	"	3/8" x 1" Bolt	48.	D31	"	"	Shear Bolt
11.	D107	"	"	Spacer	49.	23N190	"	"	Shear Hub
12.	X79	"	"	S-Hook	50.	23N191	"	"	30T Sprocket
13.	23N187	"	"	Spring	51.	31N17	37N27	37N27	Side Shield
14.	K96	"	"	Nut	52.	23N79	"	"	Bracket
15.	23N188	"	"	Shifter Bracket	53.	23N80	"	"	Shield
16.	R10	"	"	Bolt	54.	23N192	"	"	Front Shifter Arm
17.	23N63	"	"	Tightener Rod	55.	K68	"	"	Washer
18.	F129	"	"	Washer	56.	23N193	"	"	Dog
20.	F92	"	"	Shield Bracket	57.	23N194	"	"	Bolt
21.	F56	"	"	Clip Pin	58.	23N195	"	"	Shifter Panel
22.	23N305	"	"	Front Shield	59.	23N196	"	"	Speed Selector
23.	23N66	"	"	Shield	60.	X43	"	"	Cotter Pin
24.	23N67	"	"	Tailgate Hose Bracket	61.	23N197	"	"	Shifter Arm
*	HE42	"	"	Hydraulic Drive Bracket	62.	F84	"	"	Turnbuckle
25.	F54	"	"	Shield	63.	F44	"	"	Cable Loop
26.	12N29	"	"	Bearing	64.	23N198	37N64	37N64	Cable Chain
27.	F73	"	"	Snap Ring	65.	31N27	37N53	37N53	Cable
28.	5B10	"	"	1/4" x 1" Key	66.	23N242	F92	F92	Shield Bracket
29.	5B9	"	"	3/8" x 1-1/4" Key	67.	23N278	"	"	Spacer
30.	F114	"	"	Flange w/Zerk	68.	37N74	"	"	Front Shaft Guard
31.	F115	"	"	Bearing (Grease Type)	69.	23N306	"	"	Front Shield LH
32.	F14	"	"	Bearing Flange	70.	S522	"	"	Manual Holder
33.	F16	"	"	Lock Collar					
34.	23N68	"	"	Front Adjustment Plate					
35.	23N69	"	"	Spacer					
36.	23N70	"	"	25T Sprocket					
*	37N72	"	"	16T Sprocket (Optional 1,000 RPM)					
37.	23N71	"	"	#60 Roller Chain 122 Pitches					
38.	23N72	"	"	Front Shaft					
39.	F26	"	"	5/16" x 2-1/4" Roll Pin					
40.	27N49	"	"	Jack					

NOTE: " (SAME PART NO. AS MODEL 310)

*** (MEANS NOT SHOWN)**

FIGURE 4

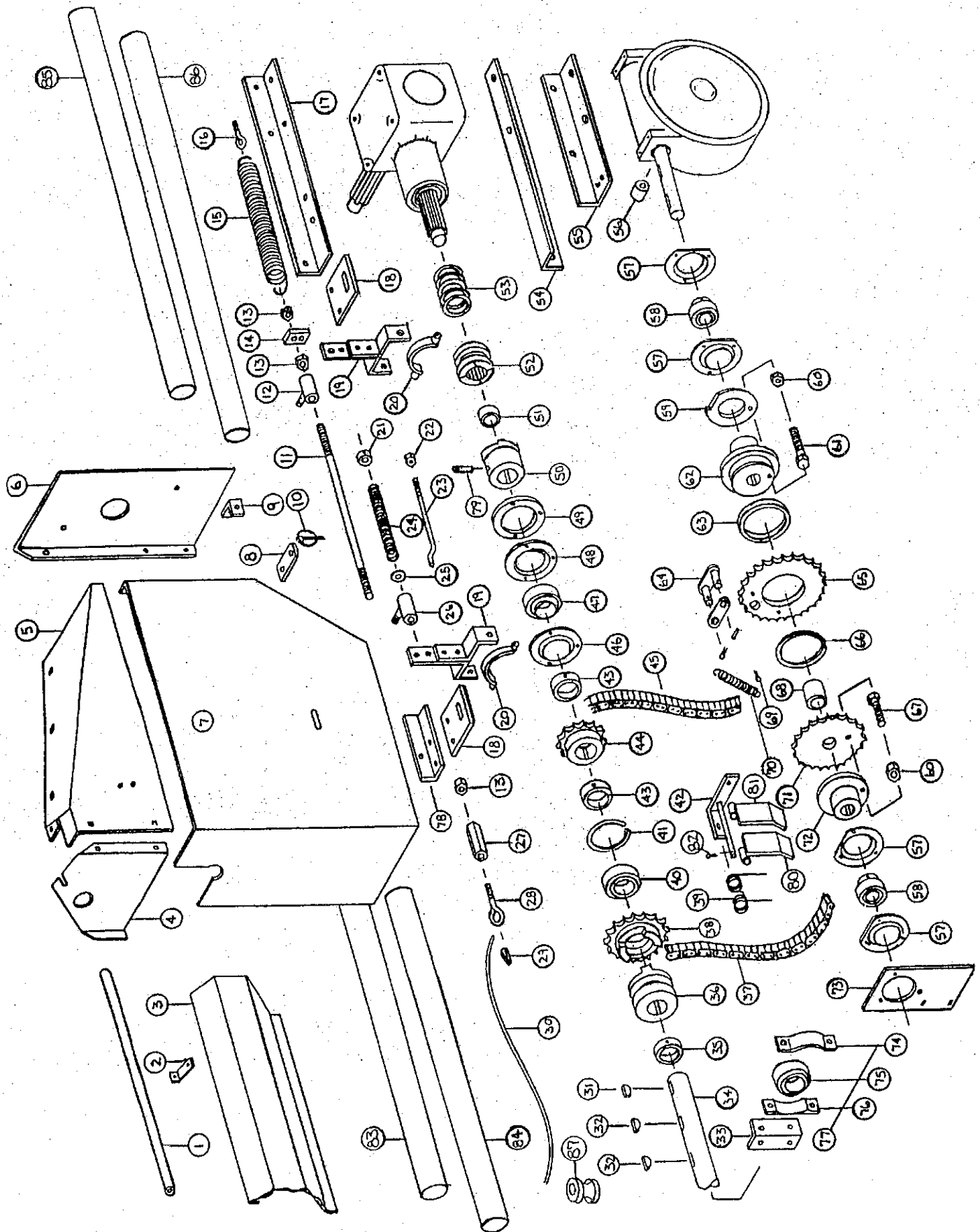


FIGURE 4
H&S MODELS 310, 370 & 430
BACK SHIELDS AND DRIVE ASSEMBLY
SPREADER MODEL & PART NO.

ITEM	310	370	430	DESCRIPTION	ITEM	310	370	430	DESCRIPTION
1.	23N200	"	"	Cable Guard	47.	F115	"	"	Bearing
2.	23N79	"	"	Side Shield Bracket	48.	F14	"	"	Flange
3.	31N28	37N54	37N54	Side Shield	49.	23N174	"	"	Flange Spacer
4.	23N201	37N55	37N55	Shield	50.	23N241	"	"	Clutch
5.	23N202	37N56	37N56	Back Shield Top	51.	D68	"	"	Bronze Bushing
6.	23N203	37N57	37N57	Back Shield	52.	23N90	"	"	Clutch
7.	23N204	"	"	Cover	53.	23N89	"	"	Spring
8.	23N96	"	"	Shield Bracket	54.	23N88	"	"	Bottom Angle
9.	-	F92	F92	Angle	55.	23N95	"	"	Worm Box Holder
10.	F56	"	"	Clip Pin	56.	23N94	"	"	Spacer
11.	23N205	"	"	Clutch Rod	57.	X85	"	"	Flange
12.	23N206	"	"	Shifting Rod Bracket	58.	23N221	"	"	Bearing w/Setscrews
13.	K60	"	"	3/8" Nut	59.	23N222	"	"	Shear Plate
14.	23N207	"	"	Spring Bracket	60.	D65	"	"	Lock Nut
15.	K103	"	"	Spring	61.	23N223	"	"	Shear Bolt
16.	K79	"	"	I-Bolt	62.	23N224	"	"	Shear Hub
17.	23N85	"	"	Top Angle	63.	23N225	"	"	Bronze Ring
18.	23N86	"	"	Shifter Bracket	64.	F157	"	"	Connector Link w/Pins
19.	D57	"	"	Shifter Lever	65.	23N226	"	"	30T Sprocket
20.	23N208	"	"	Yoke w/Zerk	66.	23N227	"	"	Snap Ring
21.	23N209	"	"	Collar	67.	23N223	"	"	Shear Bolt
22.	D65	"	"	Lock Nut	68.	23N228	"	"	Spacer
23.	23N210	"	"	Shifting Rod	69.	X43	"	"	Cotter Pin
24.	23N211	"	"	Spring	70.	23N229	"	"	Dog Spring
25.	X67	"	"	Washer	71.	D64	"	"	25T Sprocket
26.	23N206	"	"	Rod Bracket	72.	D63	"	"	Shear Hub
27.	23N212	"	"	Coupling Nut	73.	23N230	"	"	Bearing Panel
28.	23N213	"	"	I-Bolt	74.	12N34	"	"	Bearing Cover
29.	F44	"	"	Cable Loop	75.	12N33	"	"	Bearing
30.	31N27	37N53	37N53	Cable	76.	12N35	"	"	Holder
31.	5B9	"	"	3/8" x 1-1/4" Woodruff Key	77.	12N36	"	"	Bearing
32.	5B10	"	"	1/4" x 1" Woodruff Key	78.	23N239	"	"	Shifter Support
33.	23N97	"	"	Side Bearing Bracket	79.	23N240	"	"	Setscrew
34.	31N29	37N58	37N58	Side Shaft	80.	31N34	"	"	LH Tightener Bar
35.	F6	"	"	Collar	81.	31N35	"	"	RH Tightener Bar
36.	23N215	"	"	Clutch Throw-Out	82.	X43	"	"	Cotter Pin
37.	23N93	"	"	#50 Chain 60 Pitches	*	X60	"	"	#50 Offset
38.	23N216	"	"	Clutch Sprocket	*	X61	"	"	#50 Conn.
39.	31N33	"	"	Spring Tightener	*	31N38	"	"	Chain Tightener Assembly
40.	23N218	"	"	Bearing	83.	31N44	37N76	"	#2 Side Shaft Guard
41.	3G19	"	"	Snap Ring	84.	31N45	37N75	"	#1 Side Shaft Guard
42.	31N36	"	"	Tightener Bracket	85.	-	37N76	"	#4 Side Shaft Guard
43.	F16	"	"	Lock Collar	86.	31N46	37N77	"	#3 Side Shaft Guard
44.	10R11	"	"	13T Sprocket	87.	F33	"	"	Cable Guide
45.	23N220	"	"	#50 Chain 59 Pitches					
46.	F114A	"	"	Flange					

NOTE: " (SAME PART NO. AS MODEL 310)
- (PART IS NOT USED ON THIS MODEL)
*** (MEANS NOT SHOWN)**

FIGURE 5

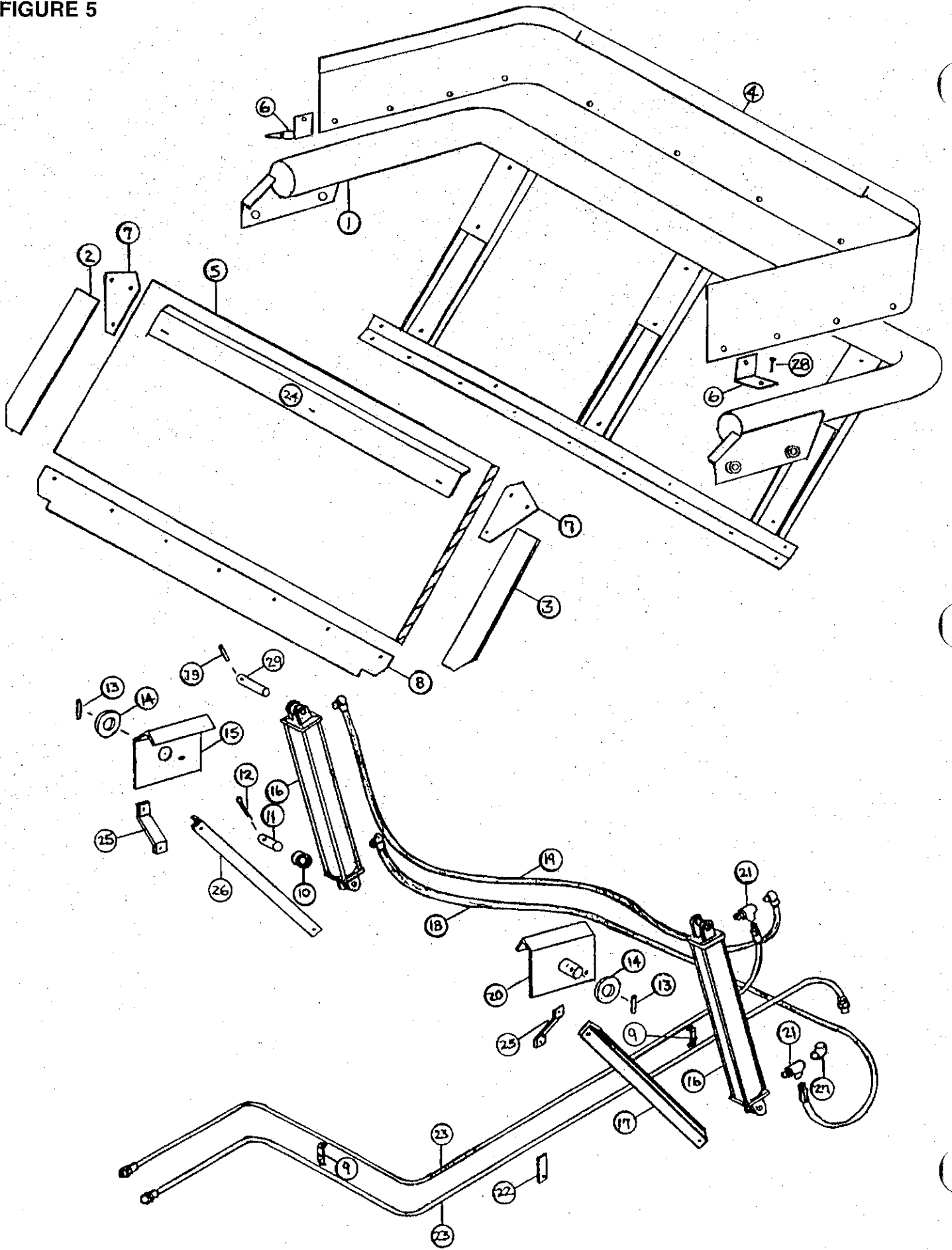


FIGURE 5
H & S MODELS 310, 370 & 430
HYDRAULIC TAILGATE ASSEMBLY
SPREADER MODEL & PART NO.

ITEM	310	370	430	DESCRIPTION
1.	23N298	37N79	37N34	Tailgate Frame
2.	23N99	37N35	37N35	RH Side Rubber
3.	23N100	37N36	37N36	LH Side Rubber
4.	-	-	43N5	Back Extension
5.	31N37A	37N69A	37N69A	Tailgate Plywood with Fiberglass
6.	-	-	43N6	Extension Angle
7.	23N104	"	"	Tailgate Corner
8.	23N105	"	"	Bottom Rubber
9.	23N67	"	"	Hose Bracket
10.	K132	"	"	Spacer
11.	23N107	"	"	Cylinder Pin
12.	23N108	"	"	Cotter Pin
13.	3G22	"	"	Roll Pin 5/16"x1-3/4"
14.	23N109	"	"	Washer
15.	23N299	"	23N110	RH Tailgate Mount
16.	23N111A	"	"	Hydraulic Cylinder
17.	23N231	37N59	37N59	Brace
18.	23N113	37N60	37N60	Hose (23N113-96" / 37N60-108")
19.	23N114	37N61	37N61	Hose (23N114-138" / 37N61-152")
20.	23N300	"	23N115	LH Tailgate Mount
21.	23N116	"	"	Tee
22.	23N117	"	"	Hose Holder
23.	31N50	37N83	37N83	Hose (31N50-316" / 37N83-328")
24.	23N163	"	"	Tailgate Poly Hold down
25.	23N232	"	"	Tailgate Bracket Brace
26.	23N233	37N62	37N62	Tailgate Bracket Brace
27.	23N234	"	"	90° Street Elbow 3/8"
28.	-	-	12V3	Self Tapping Bolt
29.	23N301	"	"	Cylinder Pin

NOTE: " (SAME PART NO. AS MODEL 310)
- (PART IS NOT USED ON THIS MODEL)

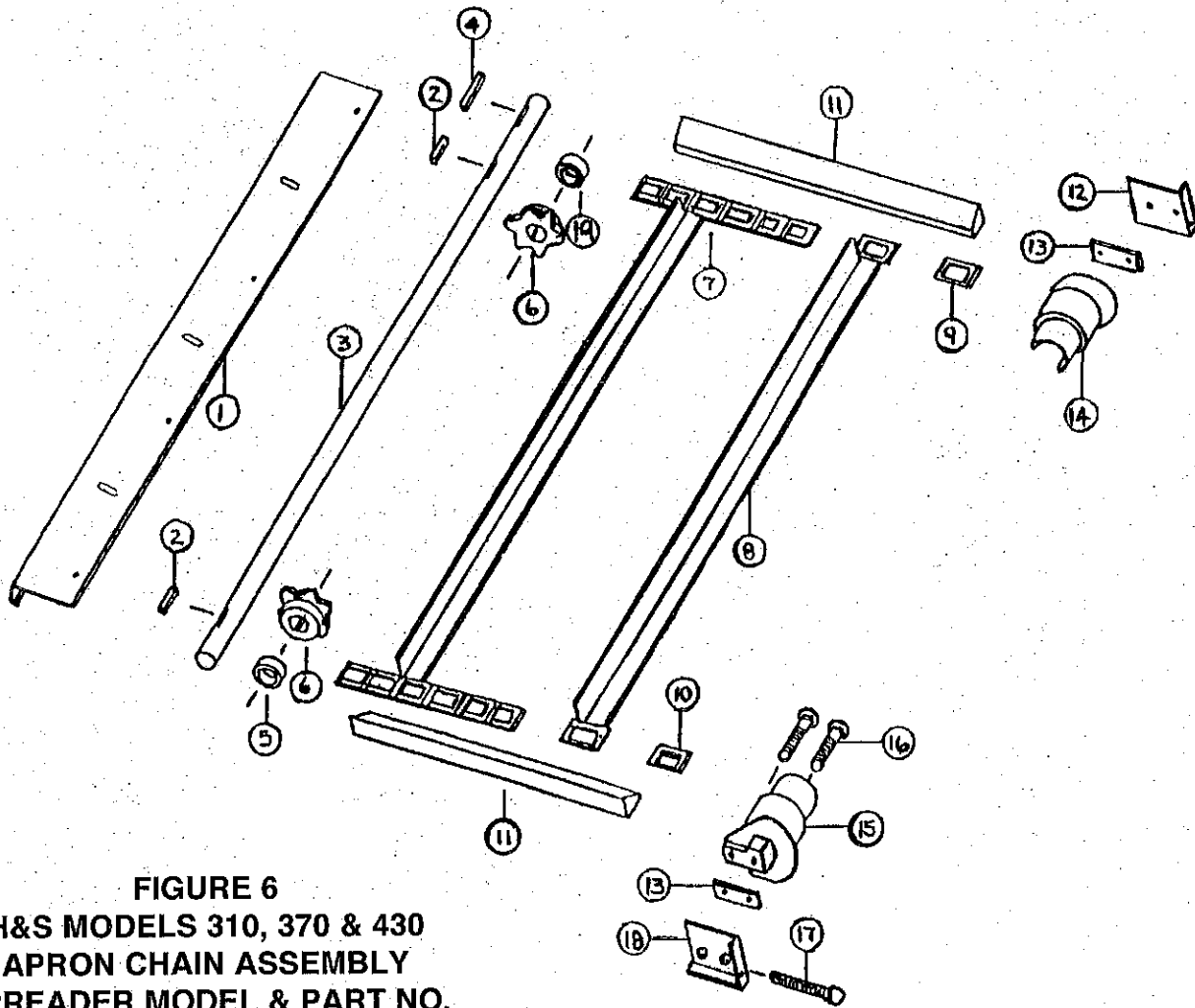


FIGURE 6
H&S MODELS 310, 370 & 430
APRON CHAIN ASSEMBLY
SPREADER MODEL & PART NO.

ITEM	310	370	430	DESCRIPTION
1.	37N82	"	"	Drive Shaft Shield
2.	23N303	"	"	3/8" x 1-3/4" Square Key
3.	27N19	"	"	Drive Shaft
4.	S138	"	"	3/8" x 2-3/8" Square Key w/Round Ends
5.	23N121	"	"	Spacer 5/8"
6.	23N122	"	"	Drive Sprocket 6T
7.	31N21	-	-	Apron Chain 26 Slats, 262 Links
	-	37N42	37N42	Apron Chain 28 Slats, 280 Links
8.	23N124	"	"	Slat w/Attachment Links
9.	S55	"	"	T-Rod Standard Link
10.	S56	"	"	T-Rod Connector Link
11.	31N22	37N43	37N43	Apron Chain Side Spacers
12.	A30	"	"	Chain Slide Plate LH
13.	23N126	"	"	Chain Slide Spacer
14.	23N127	"	"	T-Rod Slide LH
15.	23N128	"	"	T-Rod Slide RH
16.	23N129	"	"	1/2" x 4" Carriage Bolt GR.5
17.	23N130	"	"	1/2" x 4-1/2" Bolt GR.5
18.	A29	"	"	Chain Slide Plate RH
19.	23N266	"	"	Spacer 5/16"

NOTE: " (SAME PART NO. AS MODEL 310)
- (PART IS NOT USED ON THIS MODEL)

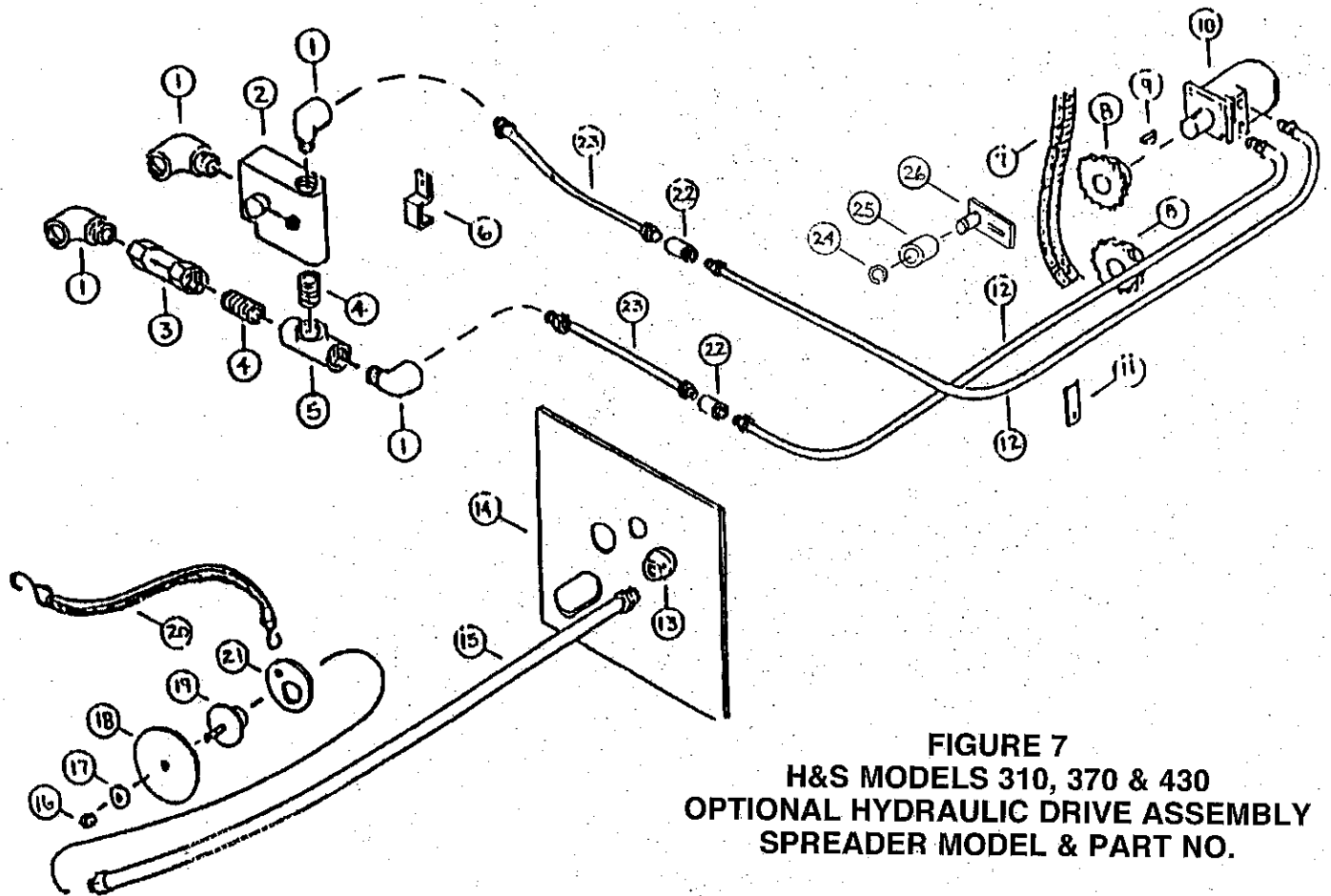


FIGURE 7
H&S MODELS 310, 370 & 430
OPTIONAL HYDRAULIC DRIVE ASSEMBLY
SPREADER MODEL & PART NO.

ITEM	310	370	430	DESCRIPTION
1.	HE58	"	"	90° Street Elbow
2.	DF15	"	"	Speed Control
3.	DF18	"	"	Check Valve
4.	DF7	"	"	Nipple
5.	DF8	"	"	Tee
6.	HE14	"	"	Hose Bracket
7.	23N131	"	"	#50 Chain 40 Pitches
8.	11S19	"	"	20T Sprocket
9.	5B10	"	"	1/4" x 1" Woodruff Key
10.	DF1	"	"	Hydraulic Motor
11.	23N117	"	"	Hose Holder
12.	23N132	"	"	Hydraulic Motor Hose Reducer
13.	DF21	"	"	Control Panel
14.	23N133	"	"	Hose for Handle
15.	DF9	"	"	
16.	K93	"	"	3/8" Lock Nut
17.	DF12	"	"	Washer
18.	DF11	"	"	Handle
19.	DF10	"	"	Handle Bracket
20.	DF14	"	"	Strap
21.	DF22	"	"	Ring for Strap
22.	31N23	"	"	Coupling
23.	HE12	"	"	Hose
24.	10R32	"	"	Snap Ring
25.	23N238	"	"	Chain Tightener Roller
26.	L10R35	"	"	Tightener Bracket

NOTE: " (SAME PART NO. AS MODEL 310)

FIGURE 8

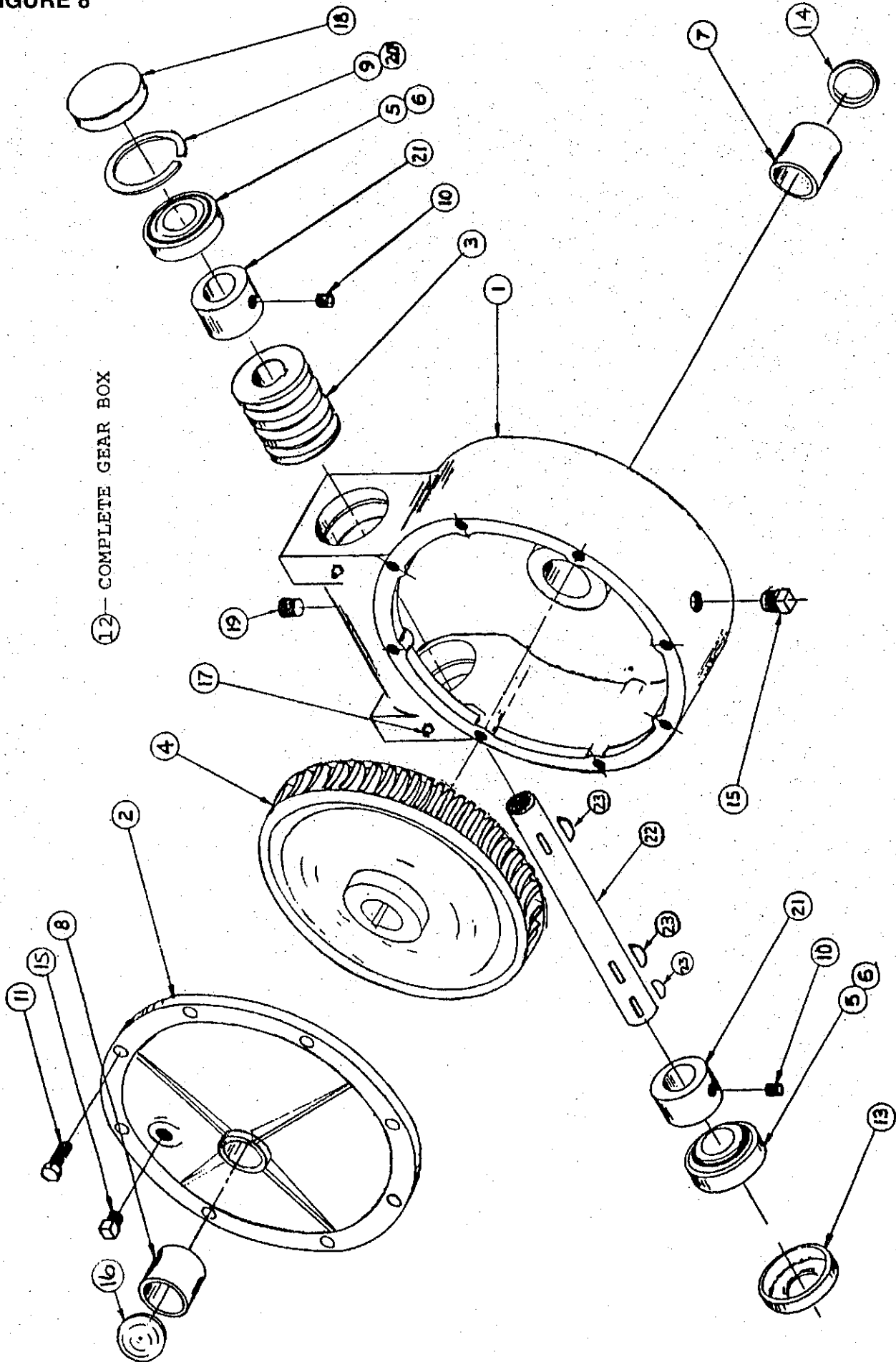


FIGURE 8
H&S MODELS 310, 370 & 430
WORM GEARBOX ASSEMBLY
SPREADER MODEL & PART NO.

ITEM	310	370	430	DESCRIPTION
1.	G114	"	"	Housing
2.	G116	"	"	Cover
3.	G76	"	"	Worm
4.	G77	"	"	Worm Gear
5.	G78	"	"	Bearing #15101
6.	G79	"	"	Bearing Cup #15245
7.	X8	"	"	Bearing - Oil Lite
8.	G81	"	"	Bearing - Oil Lite
9.	G82	"	"	Snap Ring
10.	G83	"	"	Setscrew 3/8" NC x 3/8" Long
11.	G84	"	"	Capscrew 3/8" NC x 1" Long
12.	G122	"	"	Worm Gearbox Complete
13.	G123	"	"	Seal
14.	17G133	"	"	Seal
15.	G65	"	"	Plug 3/8" NPT
16.	G117	"	"	Cap 1-7/8"
17.	G89	"	"	Zerk 1/4"-28
18.	G90	"	"	Cap
19.	G91	"	"	Vent Plug 3/8" NPT
20.	G92	"	"	Shim
21.	G93	"	"	Spacer
22.	23N236	"	"	Worm Gear Shaft
23.	5B10	"	"	1/4" x 1" Woodruff Key

NOTE: " (SAME PART NO. AS MODEL 310)

FIGURE 9

22—GEAR BOX COMPLETE

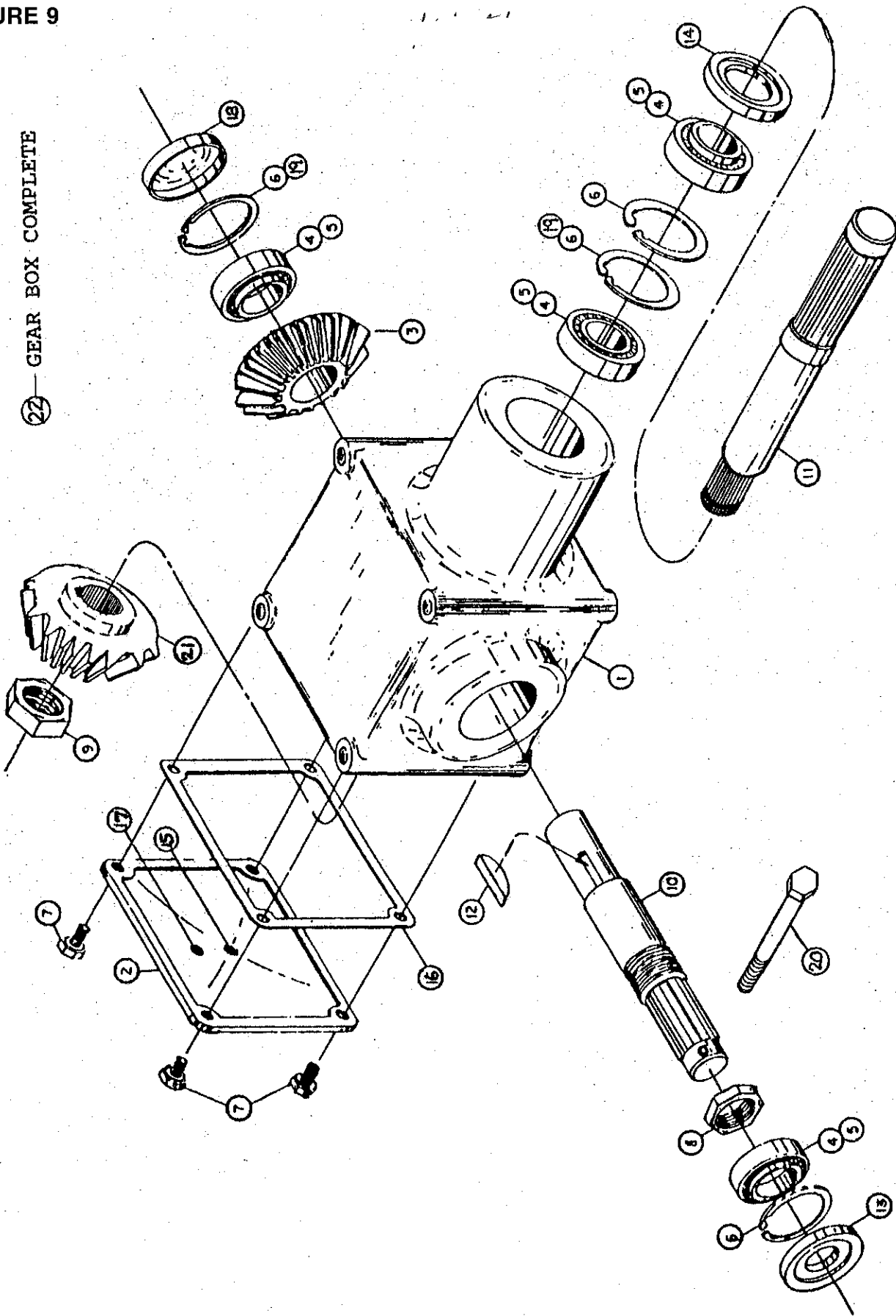


FIGURE 9
H&S MODELS 310, 370 & 430
BEVEL GEARBOX
SPREADER MODEL & PART NO.

ITEM	310	370	430	DESCRIPTION
1.	G50	"	"	Housing
2.	G51	"	"	Cover
3.	23N136	"	"	Bevel Gear 24T
4.	G53	"	"	Bearing #14137A
5.	G54	"	"	Bearing Cup #14276
6.	G55	"	"	Snap Ring
7.	G56	"	"	Capscrew
8.	G57	"	"	Stake Nut 1-1/2"
9.	31N39	"	"	Stake Nut 1-1/8"
10.	23N137	"	"	Shaft - Output
11.	31N40	"	"	Shaft - Input Double Splined
12.	G61	"	"	"E" (1210) Woodruff Key (Hard)
13.	G63	"	"	Seal - Output
14.	G64	"	"	Seal - Input
15.	G65	"	"	Plug 3/8" NPT
16.	G66	"	"	Gasket
17.	G67	"	"	Plug 1/8" NPT
18.	G68	"	"	Cap
19.	G69	"	"	Shim
20.	23N1	"	"	5/16" x 5 Bolt GR.5
21.	31N41	"	"	Bevel Gear 16T-Splined
22.	31N42	"	"	Bevel Gearbox Complete

NOTE: " (SAME PART NO. AS MODEL 310)

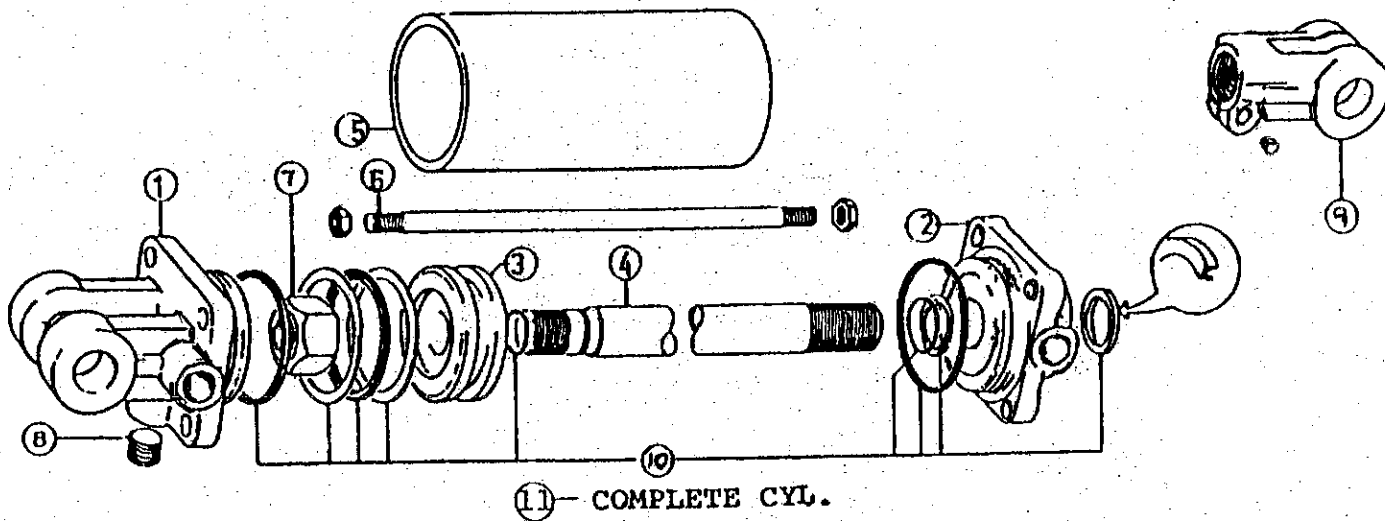


FIGURE 10
H&S MODELS 310, 370 & 430
HYDRAULIC CYLINDER
SPREADER MODEL & PART NO.

ITEM	310	370	430	DESCRIPTION
1.	23N142A	"	"	Clevis Cap
2.	23N143A	"	"	Rod Cap
3.	23N144	"	"	Piston
4.	23N145A	"	"	Rod
5.	23N146	"	"	Cylinder Tube
6.	23N147	"	"	Tie Rod
7.	23N148	"	"	Piston Nut
8.	23N149	"	"	Plug
9.	23N150A	"	"	Rod Clevis
10.	23N151	"	"	Seal Kit
11.	23N111A	"	"	Hydraulic Cylinder

NOTE: " (SAME PART NO. AS MODEL 310)

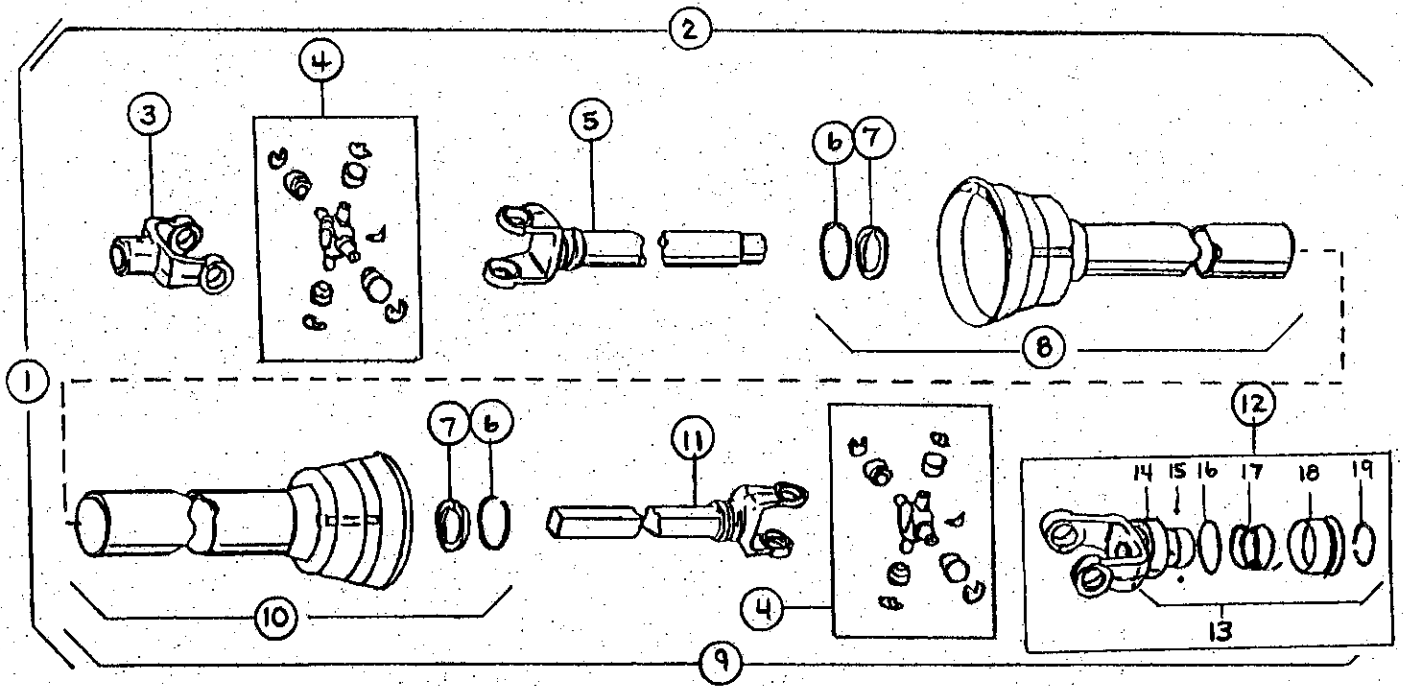


FIGURE 11
H&S MODELS 310, 370 & 430
PTO ASSEMBLY
SPREADER MODEL & PART NO.

ITEM	310	370	430	1000 RPM	DESCRIPTION
1.	23N152	"	"	23N313	PTO Assembly Complete w/Shields
2.	23N153	"	"	"	Machine Half PTO w/Shield
3.	G1R35	"	"	"	End Yoke Machine Half
4.	14NW KIT	"	"	"	Repair Kit
5.	23N155	"	"	"	Yoke and Tube
6.	24N26	"	"	"	Bearing Retainer
7.	4N20	"	"	"	Nylon Bearing
8.	23N156	"	"	"	Inner Guard Including Item #6 & #7
9.	23N157	"	"	23N314	Tractor Half PTO w/Shield
10.	23N158	"	"	23N315	Outer Guard Including Item #6 & #7
11.	23N159	"	"	"	Yoke and Shaft
12.	23N162	"	"	"	Lock Yoke Assembly
*	-	-	-	37N73	Optional 1000 RPM Yoke
13.	S225	"	"	"	Spring Lock Repair Kit
14.	S226	"	"	"	Cover
15.	S212	"	"	"	Stainless Ball
16.	S227	"	"	"	Washer
17.	S228	"	"	"	Spring
18.	S229	"	"	"	Collar Assembly
19.	S215	"	"	"	Retaining Ring
*	S402	"	"	"	PTO Safety Manual

NOTE: " (SAME PART NO. AS MODEL 310)
 * (MEANS NOT SHOWN)
 - (PART IS NOT USED ON THIS MODEL)

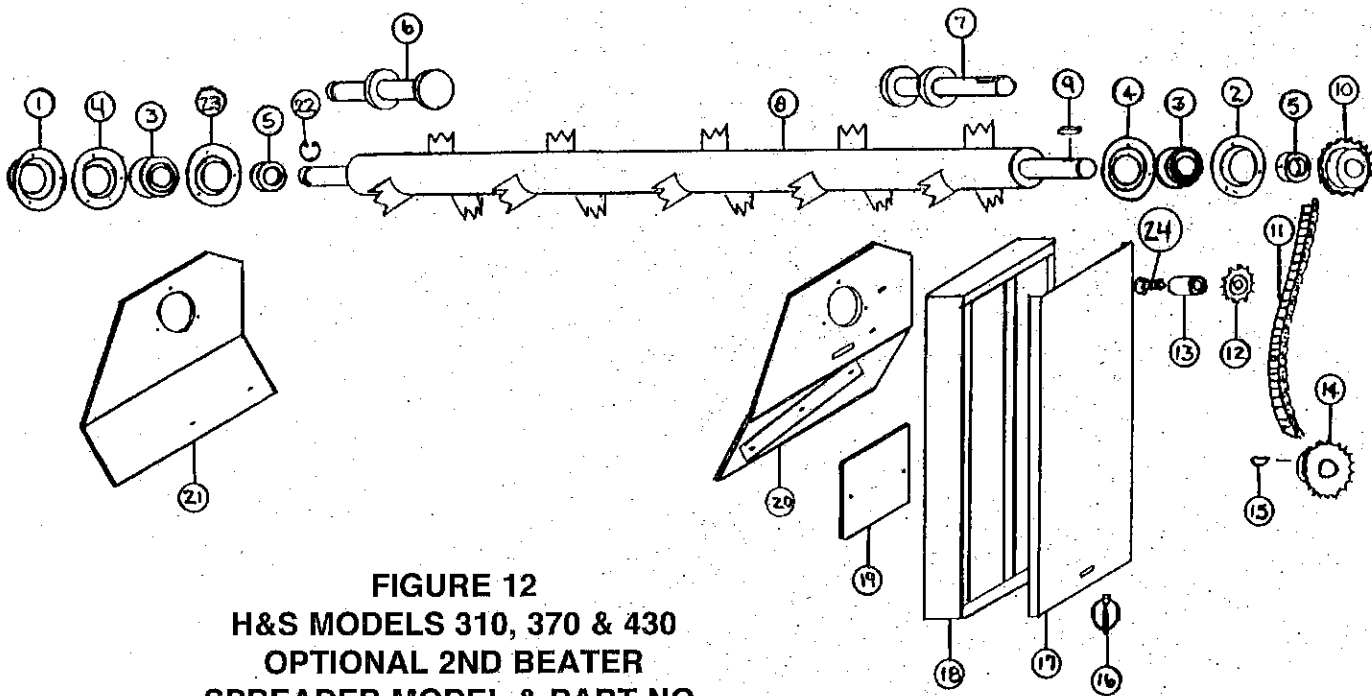


FIGURE 12
H&S MODELS 310, 370 & 430
OPTIONAL 2ND BEATER
SPREADER MODEL & PART NO.

ITEM	310	370	430	DESCRIPTION
1.	23N308	"	"	Bearing Flange Guard
2.	F114A	"	"	Bearing Flange w/Zerk - 45°
3.	F115	"	"	Bearing
4.	F14	"	"	Bearing Flange
5.	F16	"	"	Lock Collar
6.	23N164	"	"	LH Stub Shaft
7.	23N165	"	"	RH Stub Shaft
8.	23N166	"	"	2nd Beater
9.	G23	"	"	5/16" x 1-3/8" Square Key
10.	D18	"	"	Sprocket
11.	23N167	37N49	37N49	#60 Chain
12.	12N42	"	"	Idler Sprocket
13.	23N168	-	-	Spacer
14.	F13	"	"	Sprocket
15.	5B9	"	"	3/8" x 1-1/4" Key
16.	F56	"	"	Clip Pin
17.	23N169	"	"	Cover
18.	23N170	37N48	37N48	Shield
19.	23N171	37N45	37N45	Shield
20.	23N172	37N46	37N46	RH Panel
21.	23N173	37N47	37N47	LH Panel
22.	F73	"	"	Snap Ring
23.	F114	"	"	Flange w/Straight Zerk
24.	A9	-	-	Bolt 1/2" x 3-1/2" Carriage Bolt GR.5
*	-	17G98	17G98	Bolt 1/2" x 2-1/2" Carriage Bolt GR.5

NOTE: " (SAME PART NO. AS MODEL 310)
- (PART IS NOT USED ON THIS MODEL)

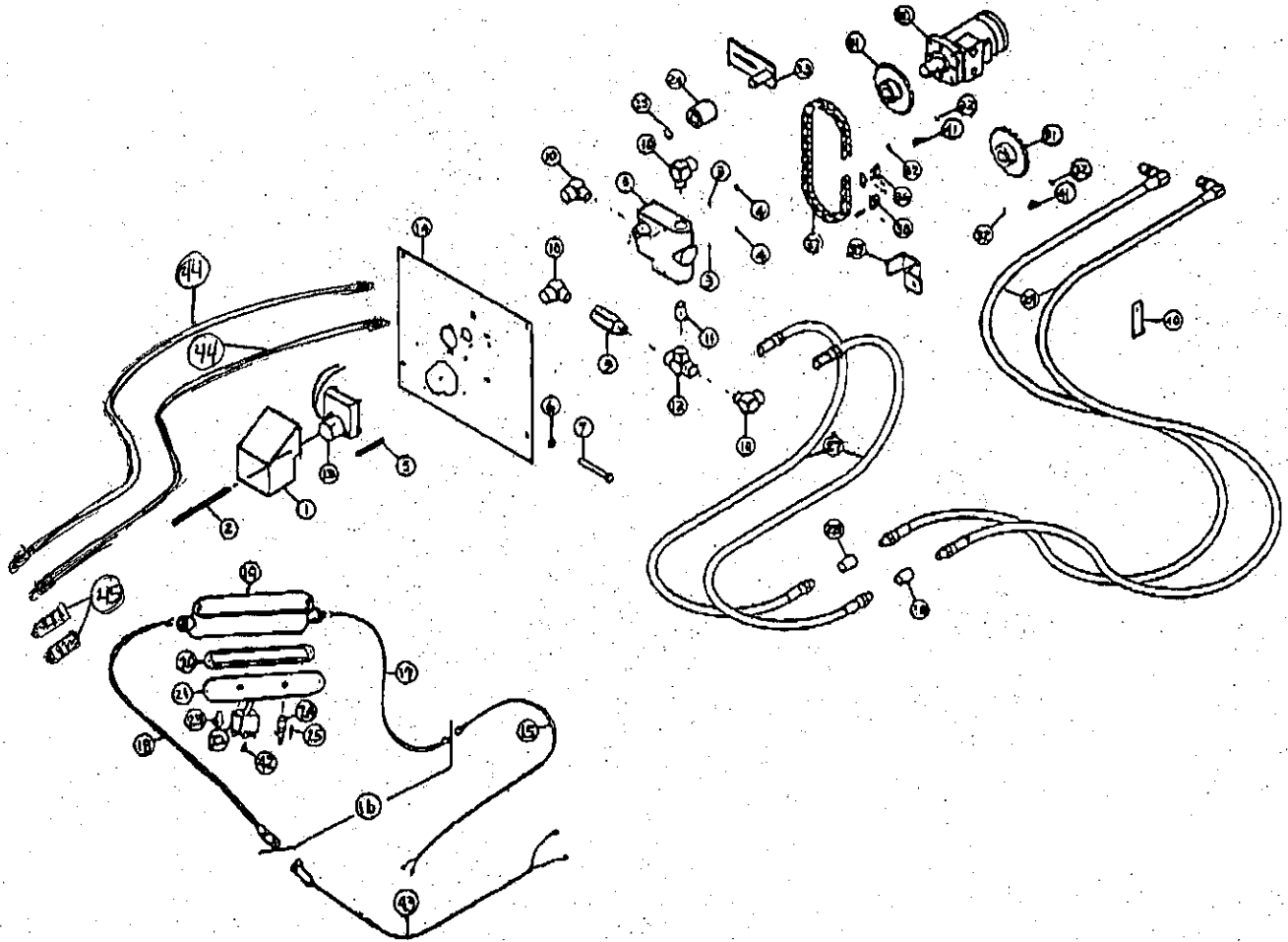


FIGURE 13
H&S MODELS 310, 370 & 430
OPTIONAL ELECTRIC / HYD. KIT

ITEM	P/N	DESCRIPTION	ITEM	P/N	DESCRIPTION
1.	43H1	Motor Shield/Holder	25.	16SV232	Fuse, 5 AMP (AGC-5)
2.	43H3	Shield Bolt	27.	HE12	Control Hose -30"
3.	K84	Lockwasher	28.	31N23	3/8 Coupling
4.	K85	Nut	29.	23N132	Hyd. Motor Hose
5.	43H4	Flow Control Mount Bolt	30.	DF1	Hyd. Motor
6.	K93	Flow Indicator Locknut	31.	11S19	Drive Sprocket
7.	43H5	Flow Indicator	32.	S435	Setscrew (5/16"-18)
8.	DF15A	Flow Control - Non-Adjustable	33.	L10R35	Tightner Bracket
9.	DF18	Check Valve	34.	23N238	Tightner Roller
10.	HE58	Elbow	35.	10R32	Snap Ring
11.	DF4	Nipple	36.	X61	#50 Chain Connector
12.	DF8	TEE	37.	23N131	#50 Chain x 40 Pitches (cutdown & reuse chain on spreader)
13.	16SV246	Gear Motor	38.	X60	#50 Chain Offset
14.	23N133	Control Panel	39.	HE14	Hose Bracket
15.	16SV272	Spreader Control Cord	40.	23N117	Hose Holder
16.	16SV321	Control End Complete	41.	5B10	1/4 x 1 Woodruff Key
17.	16SV270	Tractor Power Supply	42.	BFR320	Flag
18.	16SV271	Control Box Power Supply	43.	16SV269	Tractor End
19.	16SV316	Control Box	*	G110	3/8" x 3/4" Gr.2 Bolt
20.	16SV317	Control Box Gasket	*	B68	3/8" Lockwasher
21.	16SV318	Control Box Cover	44.	23N309	Hose
22.	16SV319	Auger Speed Switch	45.	DWM205	Male Quick Coupler
23.	16SV235	Flow Control Switch Boot			
24.	16SV231	Fuse Holde			

NOTE: * (MEANS NOT SHOWN)

- SERVICE NOTES -

Lined area for service notes.